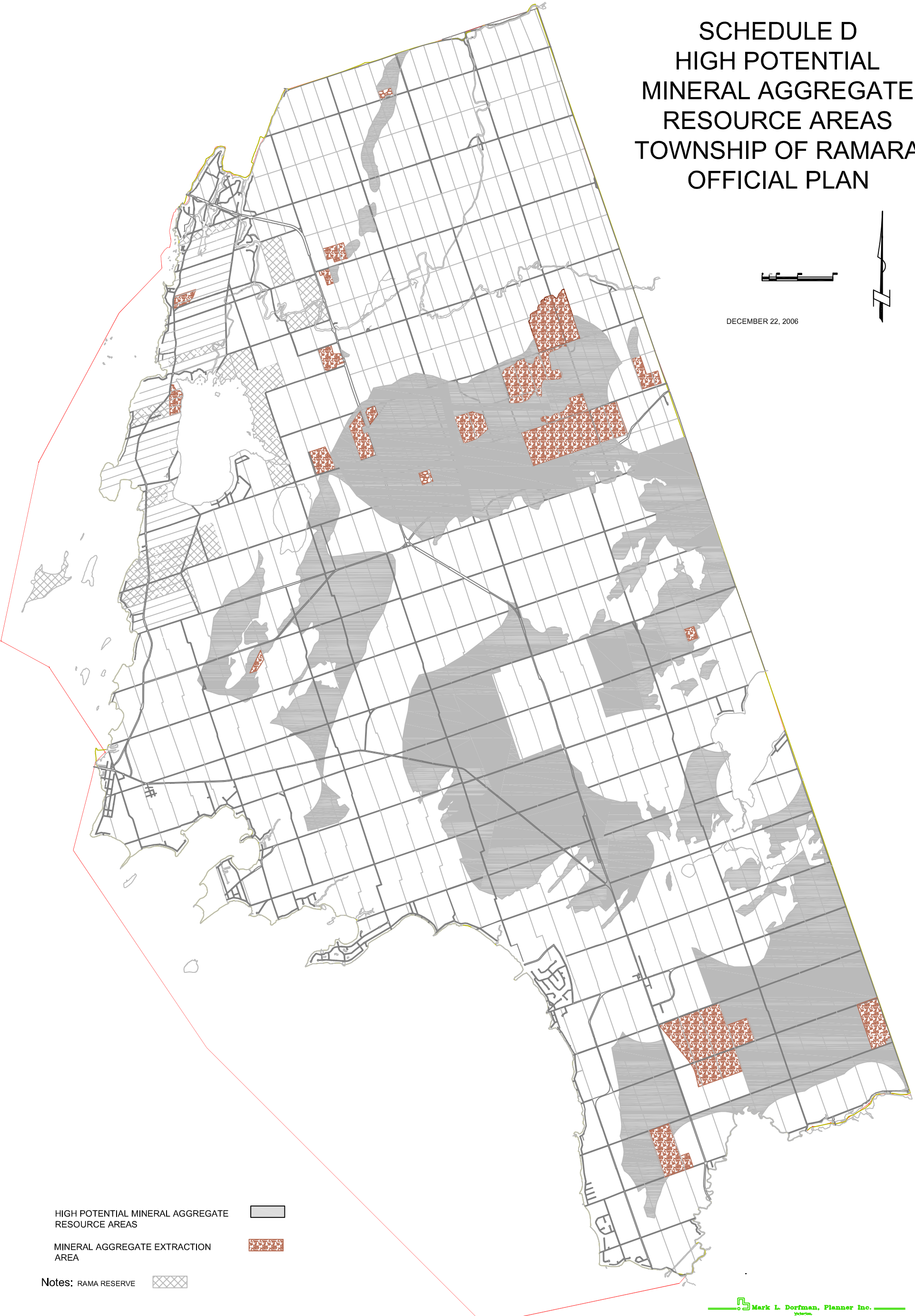


# SCHEDULE D HIGH POTENTIAL MINERAL AGGREGATE RESOURCE AREAS TOWNSHIP OF RAMARA OFFICIAL PLAN



DECEMBER 22, 2006



HIGH POTENTIAL MINERAL AGGREGATE RESOURCE AREAS 

MINERAL AGGREGATE EXTRACTION AREA 

Notes: RAMA RESERVE 