

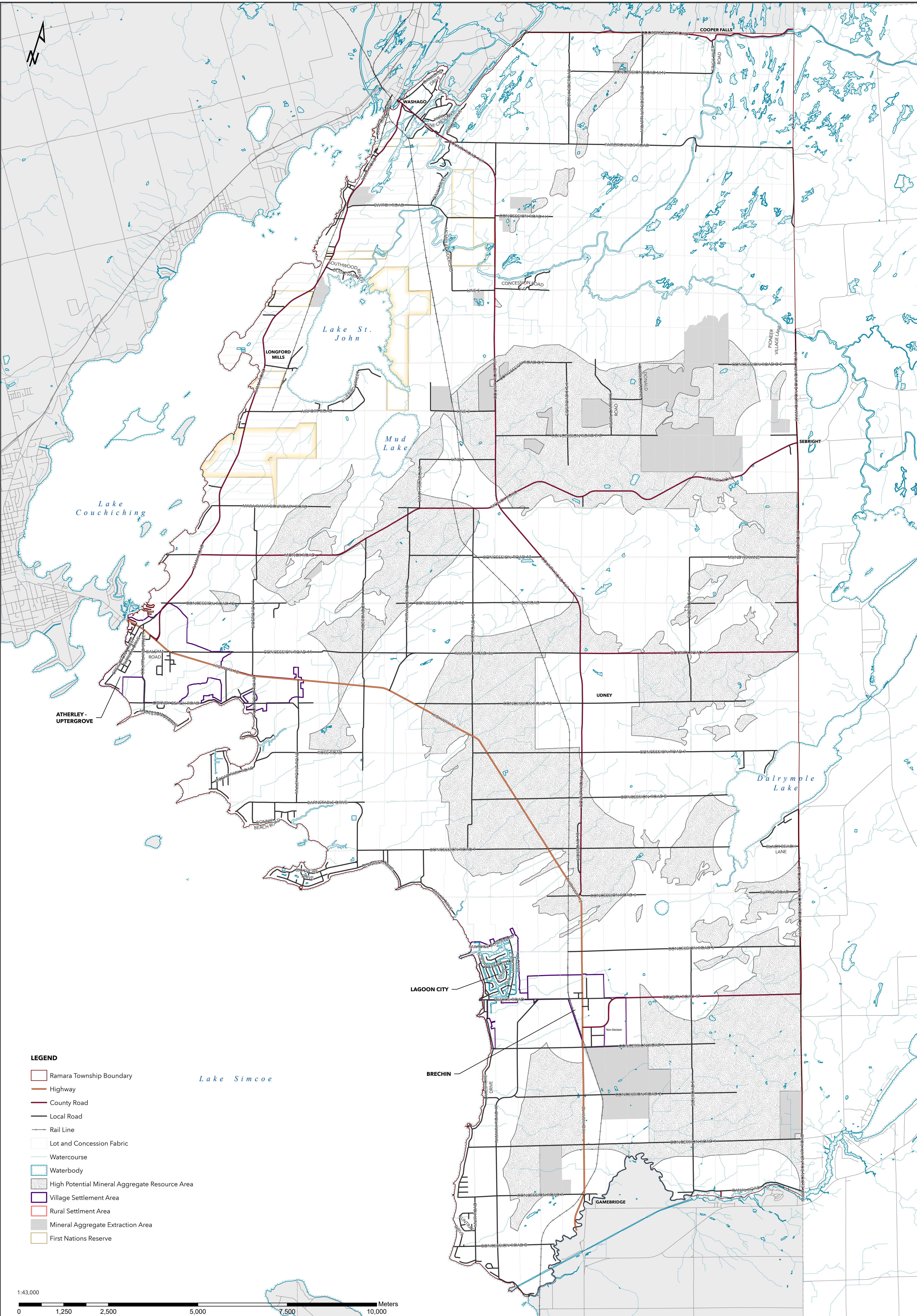
THE TOWNSHIP OF RAMARA OFFICIAL PLAN

Modified by the County of Simcoe



SCHEDULE "D" - HIGH POTENTIAL MINERAL AGGREGATE RESOURCE AREAS

Date Exported: 2026-01-22



- LEGEND**
- Ramara Township Boundary
 - Highway
 - County Road
 - Local Road
 - Rail Line
 - Lot and Concession Fabric
 - Watercourse
 - Waterbody
 - High Potential Mineral Aggregate Resource Area
 - Village Settlement Area
 - Rural Settlement Area
 - Mineral Aggregate Extraction Area
 - First Nations Reserve

